

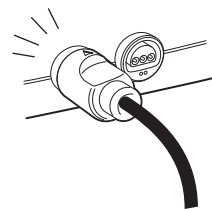
3. Make sure the Power Switch of the Control Deck is turned OFF.

CAUTION

Always make sure that the Power Switch of the Control Deck is OFF and that you have checked the Game Pak edge connector for foreign material (which can damage the Control Deck) before attempting to load a Game Pak into the Control Deck.

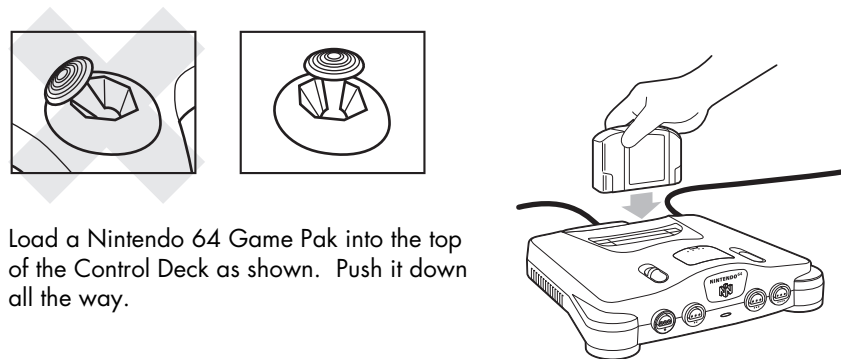
4. If not already connected, insert the Controller(s) into the socket(s) on the front of the Control Deck. (Be sure the N64 Power switch is still OFF.)

NOTE: When turning the Control Deck power ON, do not move the Control Stick from its neutral position on the controller.



If the Control Stick is held at an angled position (as shown below in the picture on the left) when the power is turned ON, this position will be set as neutral. This will cause games using the Control Stick to operate incorrectly.

To reset the neutral position once the game has started, let go of the Control Stick so it can return to its center position, as shown below in the picture on the right, then press START while holding down the L and R buttons.

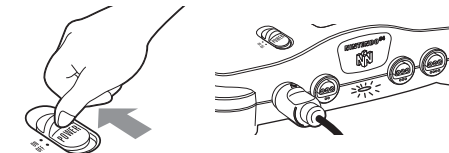


5. Load a Nintendo 64 Game Pak into the top of the Control Deck as shown. Push it down all the way.

CAUTION

Do not load the Game Pak upside down or otherwise force the Game Pak into the Control Deck. Load only an N64 Game Pak. Do not attempt to use Super NES, or any other type of Game Paks.

6. Slide the N64 Power Switch to the ON position.



*NOTE: If you have both a Nintendo 64 and a Super NES Control Deck connected, turn ON **only** one or the other.*

Make sure the red power indicator light on the front of the Control Deck is ON (if not, check the AC Power Supply and plug connection). Push the Reset button and release. After a moment, a game display should appear on the TV.

NOTE: If there is no game display, or a distorted picture appears on the TV screen, slide the Power Switch OFF and remove the Game Pak. Start over from step 3. If you are still having problems, consult the troubleshooting section on page 15, or call the Consumer Assistance Hotline at 1-800-255-3700.

7. Press START on the Controller plugged into socket number one to start the game. For further instructions, consult the instruction booklet for the Game Pak you are using.

